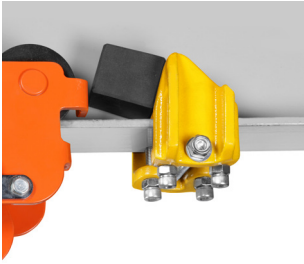
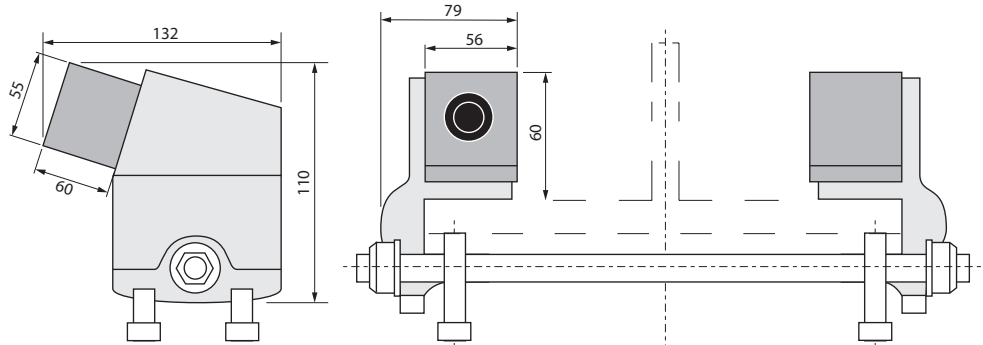


REMA beam end buffers

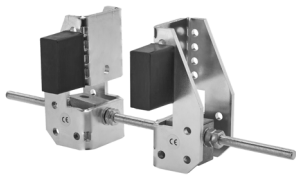


REMA adjustable buffers are applied to a monorail I / H profile track with a flat flange as an addition to your trolley-hoist system.
KB1 = Yellow coated.

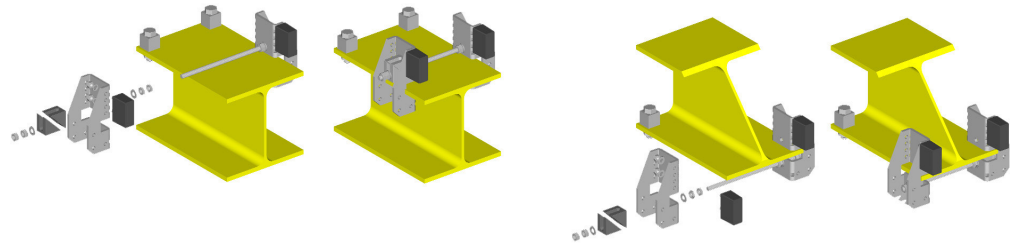


Type	Flange width (mm)	Wheel diameter (mm)	Maximum flange thickness (mm)	Weight (kg)	ProductId
KB1	80-300	60-160	25	3.4	4468000

REMA beam end buffers galvanised



REMA adjustable buffers are applied to a monorail I / H profile track with a flat flange as an addition to your trolley-hoist system.
KB2 galvanised.



Type	Flange width (mm)	Wheel diameter (mm)	Maximum flange thickness (mm)	Weight (kg)	ProductId
KB2	82-300	60-160	7-25	2.5	4468300